



BREWERS QUAY

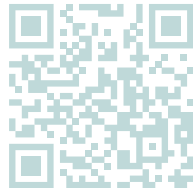
WEYMOUTH, DORSET

WHERE HISTORY BECOMES HOME

The second and highly anticipated element of the project is the redevelopment of one of Weymouth's most famous and recognisable buildings, 'Brewers Quay.' Combining an exciting blend of retail units on the ground floor alongside the return of Weymouth Museum and the construction of exciting new residential accommodation.

This long-awaited project has been the talk of the town for many years. Finally, the moment has come to see this magnificent structure brought back to life as a new destination for luxury quayside living in Dorset.

[More Info](#)





CONTENTS

4 Location

7 Mews Houses Phase One

22 Apartments Phase One

30 Full Development

DORSET

Dorset, nestled along the stunning Jurassic Coast is a veritable paradise for nature enthusiasts. Its dramatic cliffs, golden beaches, and rolling hills create an enchanting canvas. Lulworth Cove, with its azure waters, and the iconic Durdle Door, a natural limestone arch, stand as timeless symbols of Dorset's awe-inspiring beauty



WEYMOUTH

Weymouth's coastal charm invites leisurely strolls along the esplanade and tranquil harbour. The setting sun casts a warm glow on the Jurassic Coast. Immerse in serene beauty, tracing history or savouring the present.



Weymouth Train Station to:

London Waterloo 2.45hrs

Winchester 1.45hrs

Southampton 1.25hrs





HISTORY

Brewers Quay - once housed two separate breweries, namely Devenish & Co and the Hope Brewery owned by the Groves family. The Devenish family acquired the brewery in 1824 from a family who had been running it since the 1740s. Groves bought theirs from the Luckham family in 1840. Both breweries flourished on their adjoining sites. In 1903 Groves used London architects, Messrs Kinder & Son, to design a brand new brewery for them. That is the splendid red-brick building that is still a key feature of Hope Square. Devenish on the other hand continued to operate in a complex of buildings next door. They suffered considerable damage from bombing in the Second World War, requiring rebuilding post-war. In 1960 Devenish took over the Groves business and ran them together until the last brew in November 1985. Where possible, features and historical reminders of this Brewing past have been retained and incorporated into the redevelopment of Brewers Quay, enhancing the alignment of old and new character.

MEWS HOUSES

PHASE ONE



BREWERS QUAY

WEYMOUTH, DORSET

A selection of units exclusively available for release for phase one
Mews Houses 1 - 11

SPECIFICATIONS

Kitchen:

- ◆ White marble effect 20mm quartz worktops
- ◆ Full height splashbacks
- ◆ Oak effect laminate doors antique brass edge pull handles.
- ◆ Single oven, induction hob, integrated fridge freezer, dishwasher

Bathrooms:

- ◆ Concealed cisterns with wall hung pans.
- ◆ Matt black brassware
- ◆ Overhead wall mounted shower and hand shower with concealed valves.
- ◆ Black wall hung vanity with basins and monobloc mixer.
- ◆ Contemporary black shower screens and matching towel radiators.
- ◆ Floor and lower-level stone effect tile with stacked vertical Taupe tiles above.
- ◆ En-Suites: as above but with Sage Green wall hung vanity with basin. White stacked vertical tile above lower-level stone effect tiles.

Doors:

- ◆ Industrial style doors with designer lever handle in antique brass.

Flooring:

- ◆ Warm oak rustic grade luxury vinyl plank to kitchens, living rooms and hallways. Cut pile heavy weight carpet to bedrooms.

Lighting:

- ◆ Matt black light switches. matt black sockets. Pendant lighting where possible and where appropriate, surface mounted track spotlights to exposed beams or architectural features.

*images are for guidance only and used for inspirational mood board





Proposed Ground Floor Plan
 scale 1:200
 0 4m 8m 12m

PHASE 1

GROUND FLOOR

MEWS HOUSES

The Mews Houses provide a unique style of accommodation within Brewers Quay.

Situated to the rear of the main building, fronting the paved, planted pedestrian street scene.

- Two Bedroom**
 Mews House One
 Mews House Two
 Mews House Three
 Mews House Four
 Mews House Five
 Mews House Six
 Mews House Eight
 Mews House Nine
 Mews House Eleven

- Three Bedroom**
 Mews House Seven
 Mews House Ten



Proposed First Floor Plan
 scale 1:200
 0 4m 8m 12m

PHASE 1

FIRST FLOOR
 MEWS HOUSES

First floor
 accommodation for
 the Mews Houses



Proposed Second Floor Plan
 scale 1:200

PHASE 1

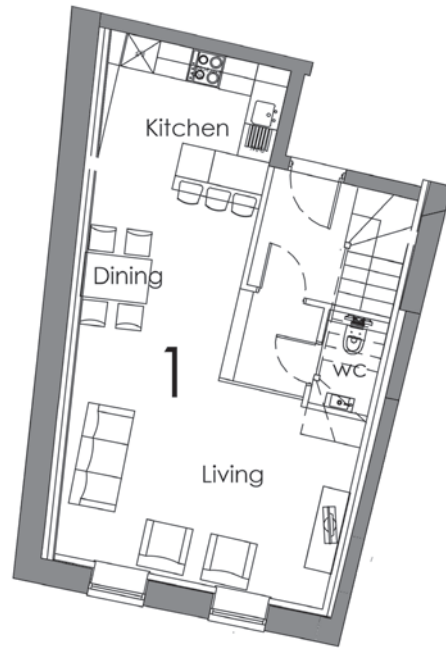
SECOND FLOOR

MEWS HOUSES

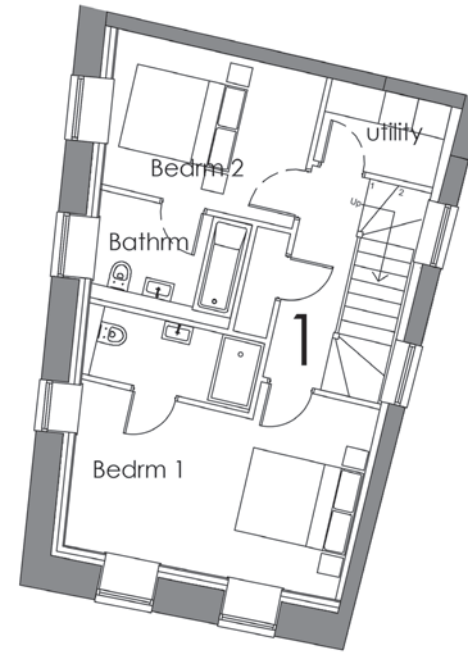
Second floor
 accommodation for
 the Mews Houses 7-10

MEWS HOUSE 1 | 2 BEDROOM

GROUND FLOOR



FIRST FLOOR



MEWS HOUSE 1 - TWO STOREY
TWO BEDROOMS, TWO BATHROOMS

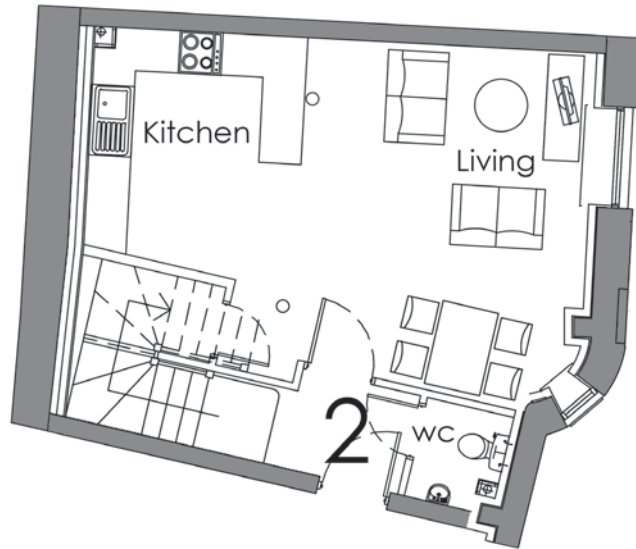
HOME SPECIFICATIONS

Living/Dining/Kitchen	4.9m x 9.3m	16'0" x 30'5"
Bedroom One	4.9m x 3.5m	16'0" x 11'4"
Bedroom Two	3.9m x 2.8m	12'6" x 9'0"

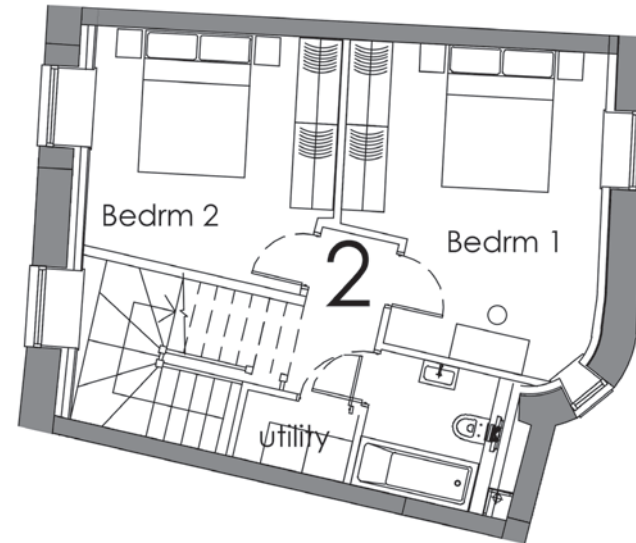
*all measurements are for guidance only and may vary slightly during the building stage

MEWS HOUSE 2 | 2 BEDROOM

GROUND FLOOR



FIRST FLOOR



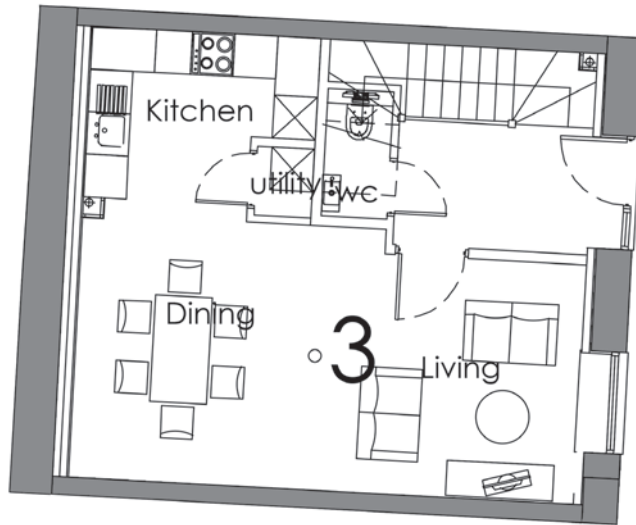
MEWS HOUSE 2 - TWO STOREY
TWO BEDROOMS, ONE BATHROOM

HOME SPECIFICATIONS

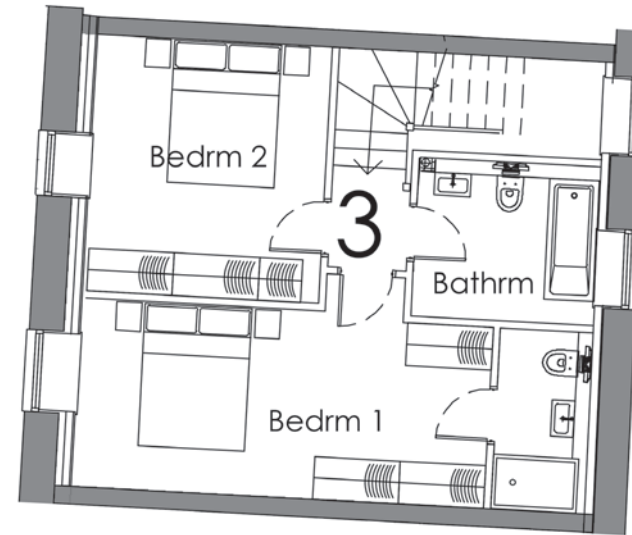
Living/Dining/Kitchen	7.1m x 3.7m	23'2" x 12'1"
Bedroom One	3.6m x 3.5m	11'8" x 11'4"
Bedroom Two	3.5m x 3.0m	11'4" x 9'8"

MEWS HOUSE 3 | 2 BEDROOM

GROUND FLOOR



FIRST FLOOR



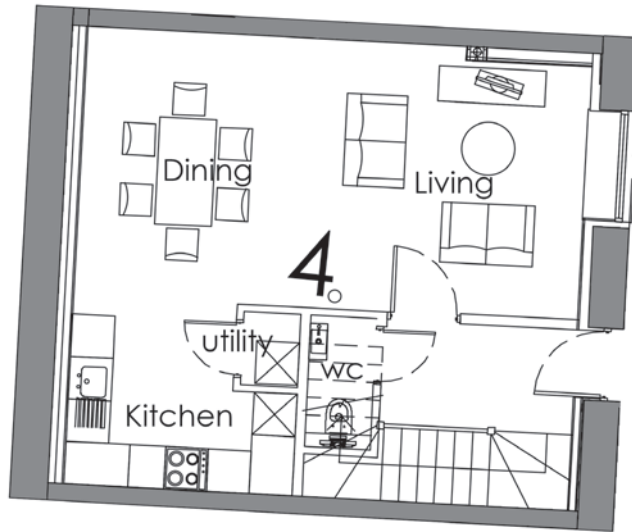
MEWS HOUSE 3 - TWO STOREY
TWO BEDROOMS, TWO BATHROOMS

HOME SPECIFICATIONS

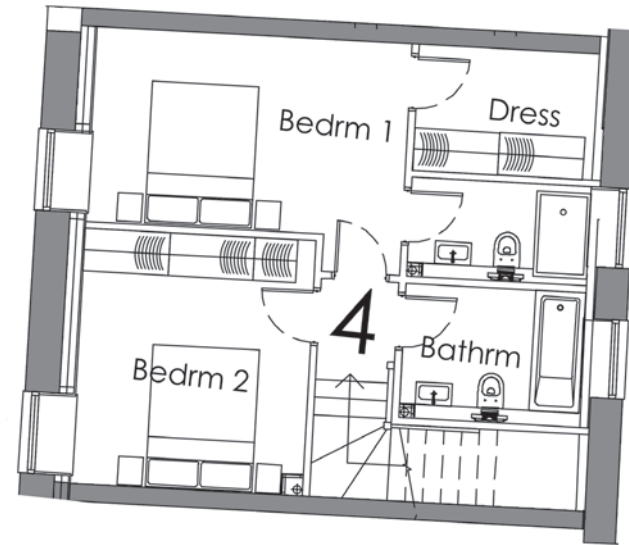
Living/Dining/Kitchen	6.3m x 7.0m	20'6" x 22'9"
Bedroom One	5.5m x 2.4m	18'0" x 7'8"
Bedroom Two	3.4m x 3.8m	11'1" x 12'4"

MEWS HOUSE 4 | 2 BEDROOM

GROUND FLOOR



FIRST FLOOR



MEWS HOUSE 4 - TWO STOREY
TWO BEDROOMS, TWO BATHROOMS, DRESSING ROOM

HOME SPECIFICATIONS

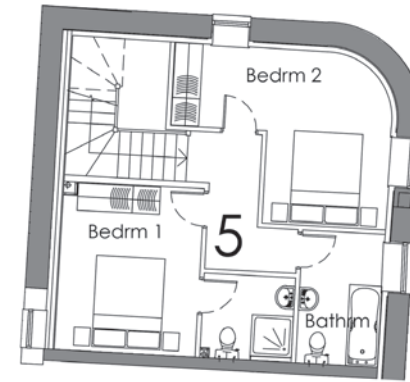
Living/Dining/Kitchen	6.9m x 6.0m	22'6" x 19'6"
Bedroom One	4.4m x 2.7m	14'4" x 8'8"
Bedroom Two	3.3m x 3.4m	10'8" x 11'1"

MEWS HOUSE 5 | 2 BEDROOM

GROUND FLOOR



FIRST FLOOR



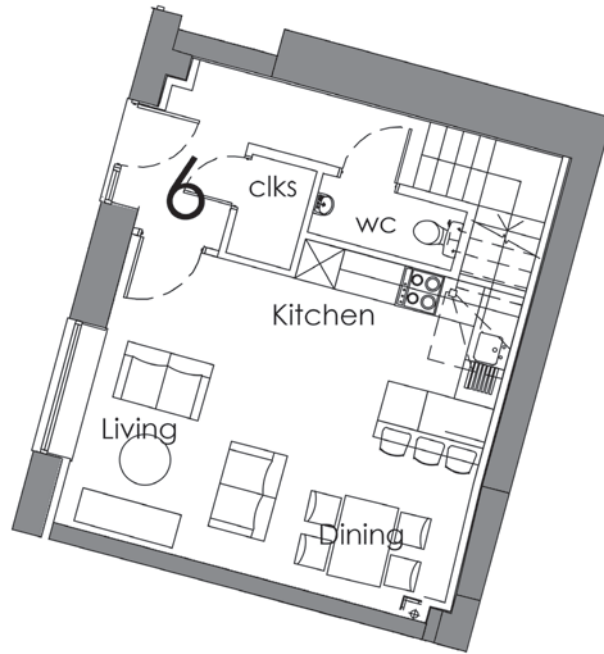
MEWS HOUSE 5 - TWO STOREY
TWO BEDROOMS, TWO BATHROOMS

HOME SPECIFICATIONS

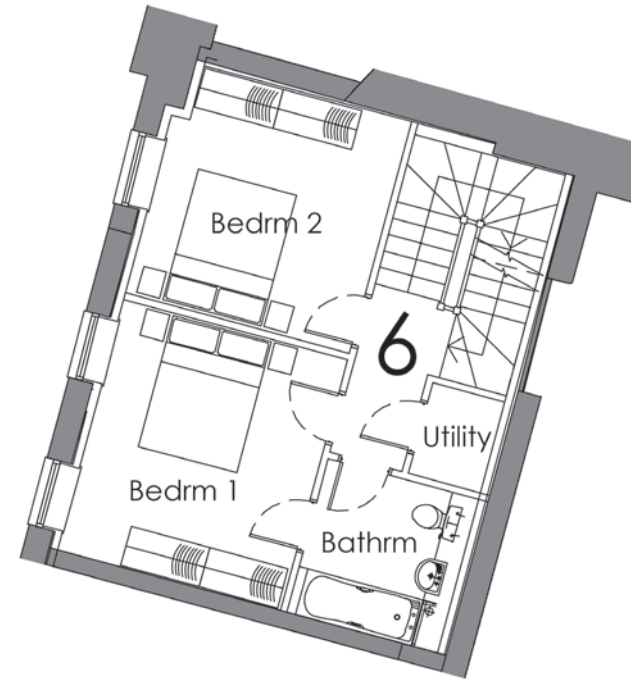
Living/Dining/Kitchen	6.8m x 6.3m	22'3" x 20'6"
Bedroom One	3.1m x 3.7m	10'1" x 12'1"
Bedroom Two	4.6m x 3.9m	15'0" x 12'7"

MEWS HOUSE 6 | 2 BEDROOM

GROUND FLOOR



FIRST FLOOR



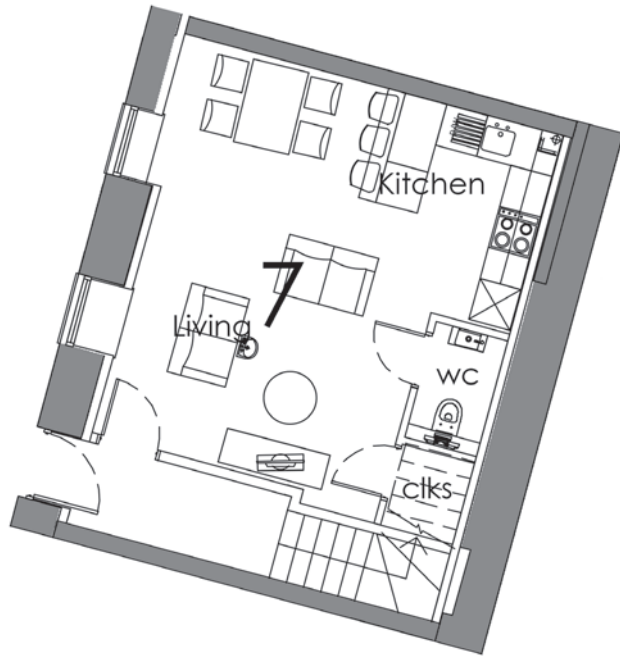
MEWS HOUSE 6 - TWO STOREY
TWO BEDROOMS, ONE BATHROOM

HOME SPECIFICATIONS

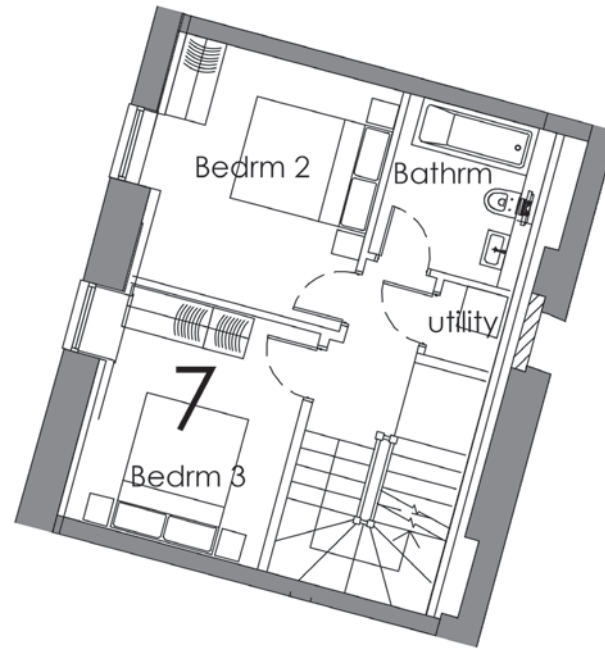
Living/Dining/Kitchen	5.3m x 4.9m	17'3" x 16'0"
Bedroom One	3.3m x 3.7m	10'8" x 12'1"
Bedroom Two	3.1m x 2.9m	10'1" x 9'5"

MEWS HOUSE 7 | 3 BEDROOM

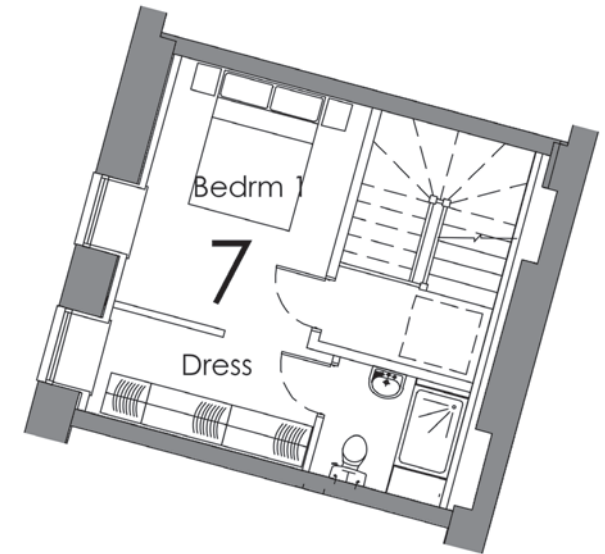
GROUND FLOOR



FIRST FLOOR



SECOND FLOOR



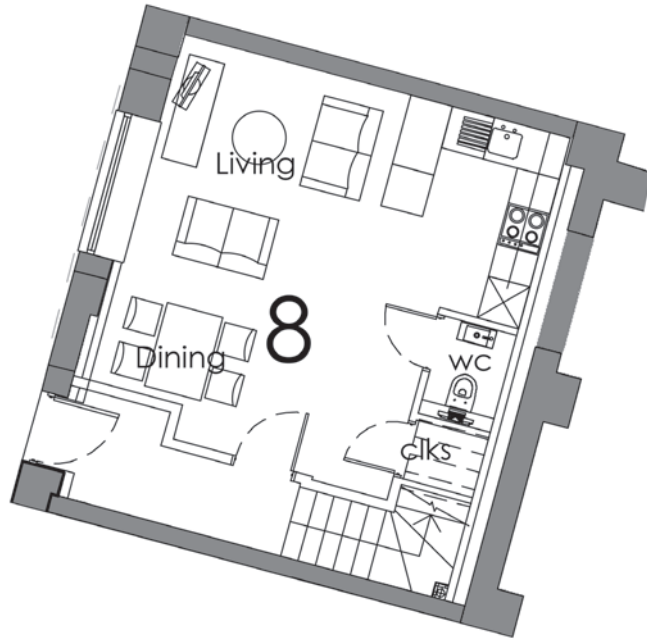
MEWS HOUSE 7 - THREE STOREY
THREE BEDROOMS, TWO BATHROOMS, DRESSING ROOM

HOME SPECIFICATIONS

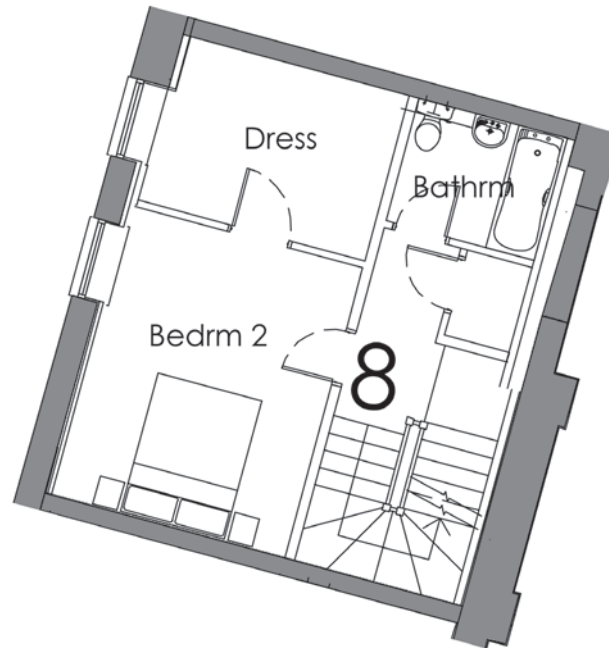
Living/Dining/Kitchen	4.9m x 5.6m	16'0" x 18'3"
Bedroom One	2.8m x 3.6m	9'1" x 11'8"
Bedroom Two	3.4m x 3.5m	11'1" x 11'5"
Bedroom Three	2.7m x 3.4m	8'8" x 11'1"

MEWS HOUSE 8 | 2 BEDROOM

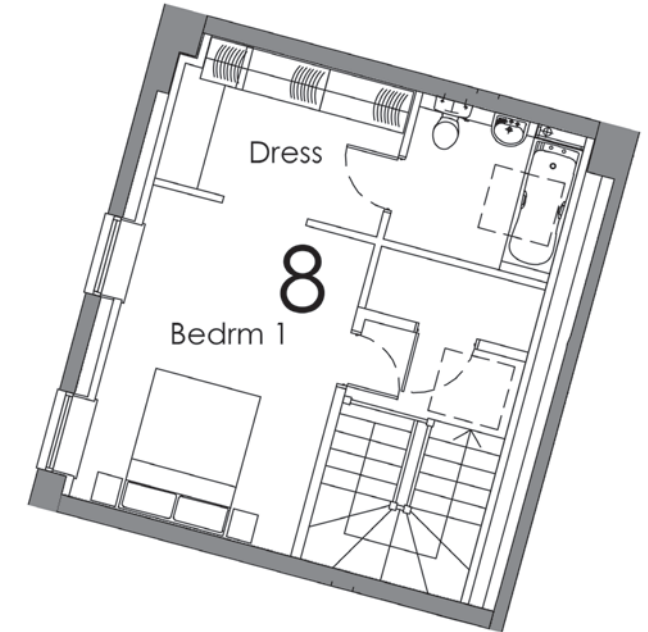
GROUND FLOOR



FIRST FLOOR



SECOND FLOOR



MEWS HOUSE 8 - THREE STOREY
TWO BEDROOMS, TWO BATHROOMS, TWO DRESSING ROOMS

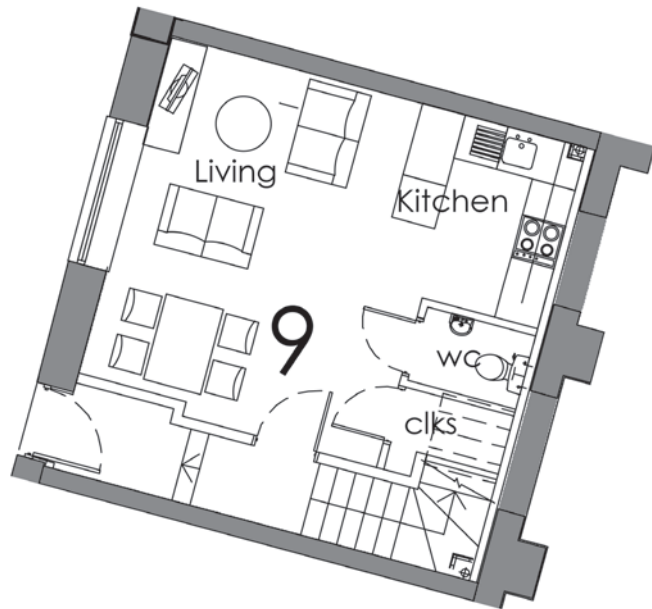
F

HOME SPECIFICATIONS

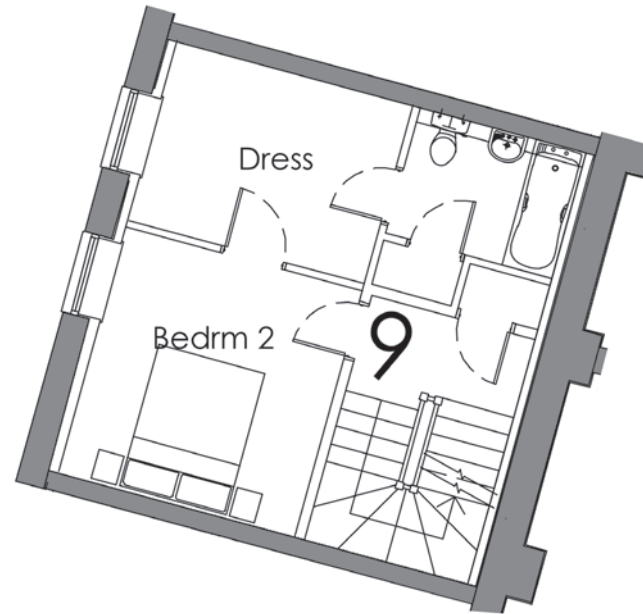
Living/Dining/Kitchen	5.8m x 5.3m	19'0" x 17'3"
Bedroom One	3.5m x 4.5m	11'4" x 14'7"
Bedroom Two	3.3m x 4.1m	10'8" x 13'4"

MEWS HOUSE 9 | 2 BEDROOM

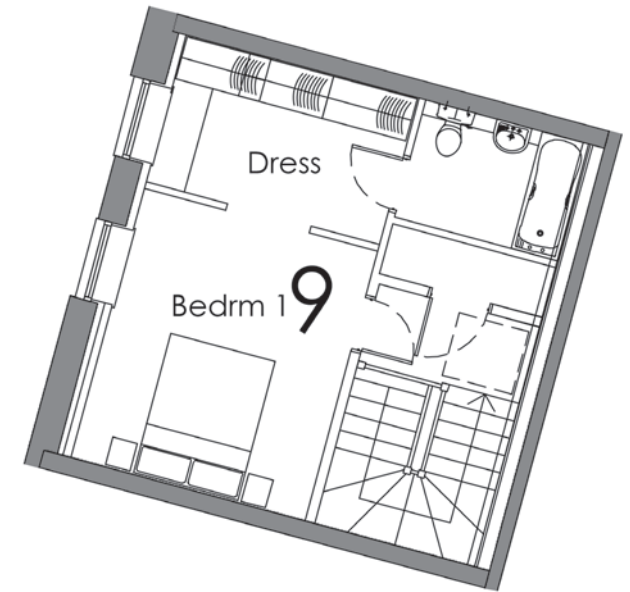
GROUND FLOOR



FIRST FLOOR



SECOND FLOOR



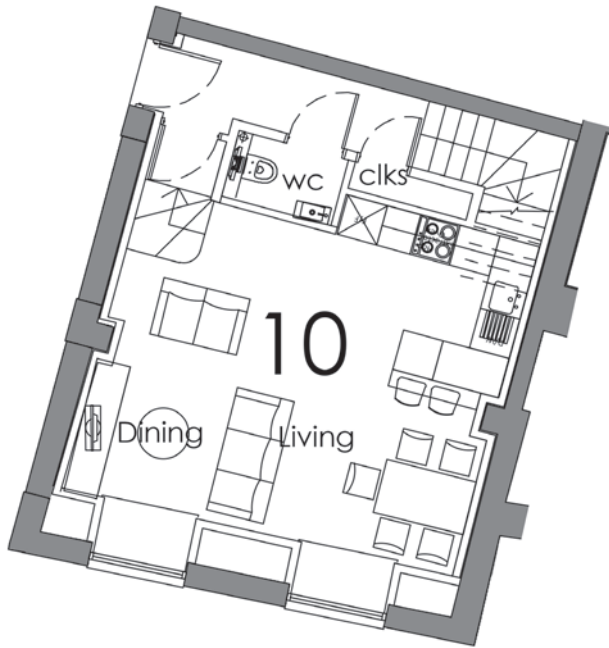
MEWS HOUSE 9 - THREE STOREY
TWO BEDROOMS, TWO BATHROOMS, TWO DRESSING ROOMS

HOME SPECIFICATIONS

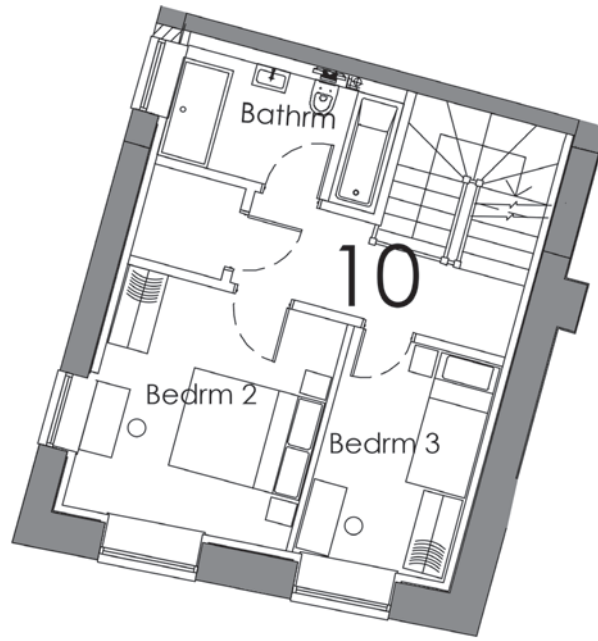
Living/Dining/Kitchen	5.6m x 4.7m	18'3" x 15'4"
Bedroom One	3.5m x 3.9m	11'4" x 12'7"
Bedroom Two	3.4m x 3.4m	11'1" x 11'1"

MEWS HOUSE 10 | 3 BEDROOM

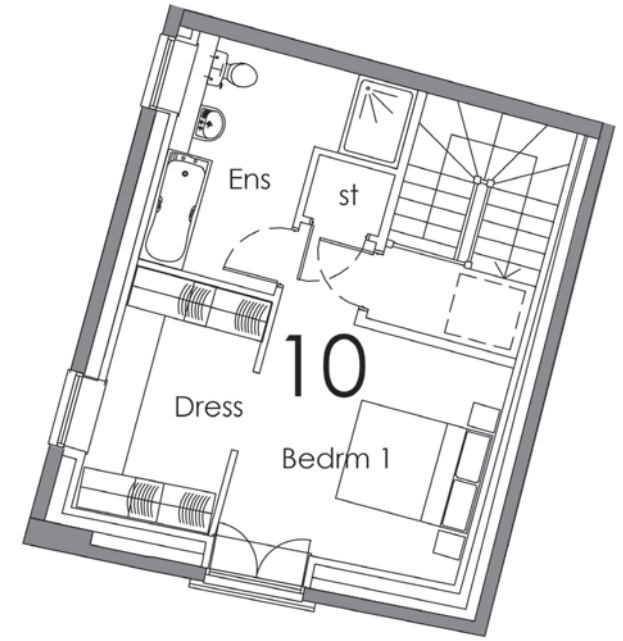
GROUND FLOOR



FIRST FLOOR



SECOND FLOOR



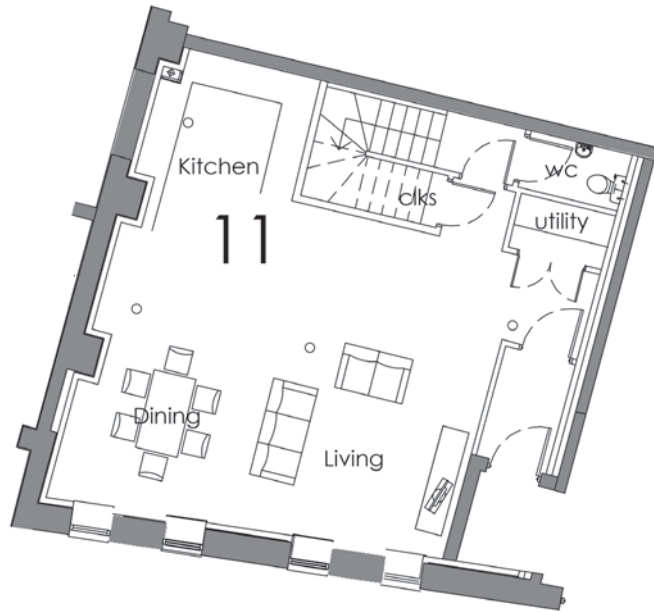
MEWS HOUSE 10 - THREE STOREY
THREE BEDROOMS, TWO BATHROOMS, DRESSING ROOM

HOME SPECIFICATIONS

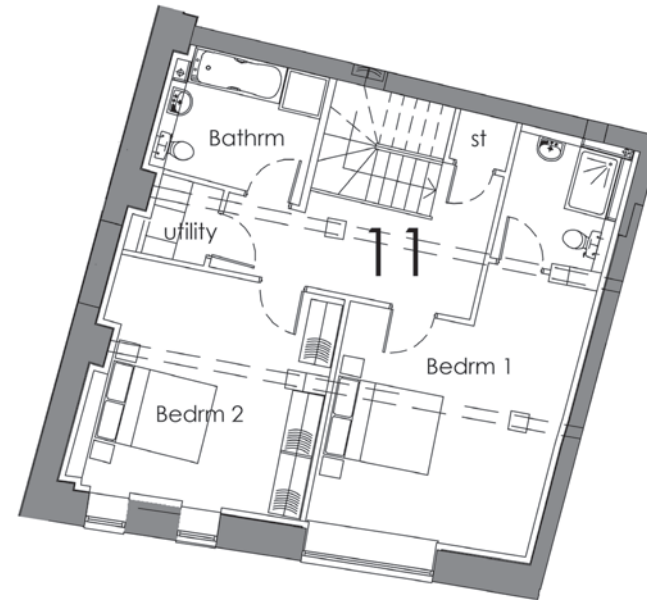
Living/Dining/Kitchen	5.5m x 5.3m	18'0" x 17'3"
Bedroom One	3.8m x 3.6m	12'4" x 11'8"
Bedroom Two	3.3m x 3.3m	10'8" x 10'8"
Bedroom Three	3.3m x 2.2m	10'8" x 7'2"

MEWS HOUSE 11 | 2 BEDROOM

GROUND FLOOR



FIRST FLOOR



MEWS HOUSE 11 - TWO STOREY
TWO BEDROOMS, TWO BATHROOM

HOME SPECIFICATIONS

Living/Dining/Kitchen	7.5m x 7.8m	24'6" x 25'5"
-----------------------	-------------	---------------

Bedroom One	4.1m x 5.2m	13'4" x 17'0"
-------------	-------------	---------------

Bedroom Two	4.3m x 4.2m	14'1" x 13'7"
-------------	-------------	---------------

APARTMENTS

PHASE ONE



BREWERS QUAY

WEYMOUTH, DORSET

A selection of units exclusively available for release for phase one
Apartments 12 - 16, 26 & 27

SPECIFICATIONS

Kitchen:

- ◆ White marble effect 20mm Quartz worktops
- ◆ Full height splashbacks
- ◆ Matt Graphite/Anthracite coloured doors, antique brass edge pull handles.

Bathrooms:

- ◆ Concealed cisterns with wall hung pans.
- ◆ Matt black brassware.
- ◆ Shower on riser rail and hand shower with concealed valves.
- ◆ Black wall hung vanity units with basins and monobloc mixer.
- ◆ Contemporary black shower screens and matching towel radiators.
- ◆ Floor and lower-level stone effect tile with stacked vertical Taupe tiles above.

En-Suites:

- ◆ As above but with Sage Green wall hung vanity with basin.
- ◆ Overhead wall mounted shower head and hand shower with concealed valves. White stacked vertical tile above lower-level stone effect tiles.

Doors:

- ◆ Industrial style doors with designer lever handle in antique brass.

Flooring:

- ◆ Warm oak rustic grade luxury vinyl plank to kitchens, living rooms and hallways. Cut pile heavy weight carpet to bedrooms.

Lighting:

- ◆ Matt black light switches. matt black sockets. Pendant lighting where possible. Only where appropriate surface mounted track spotlights to exposed beams, vaulted ceilings or architectural features.

*images are for guidance only and used for inspirational mood board





Proposed First Floor Plan
 scale 1:200
 0 4m 8m 12m

PHASE 1

FIRST FLOOR APARTMENTS

Offering a range of accommodation within the First Floor of the main Brewers Quay building.

These phase one units comprise

Apartments 12
 3 Bedroom Duplex

Apartments 13
 3 Bedroom Duplex

Apartment 14
 Two bedroom

Apartments 15
 One bedroom

Apartments 16
 One bedroom



Proposed Second Floor Plan
 scale 1:200
 0 4m 8m 12m

PHASE 1

SECOND FLOOR

APARTMENTS

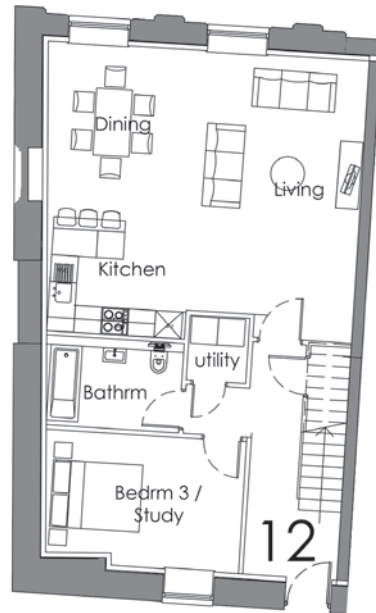
Positioned on the Second Floor of the main Brewers Quay building and especially selected for Phase one release.

Apartment 26
 Two bedroom

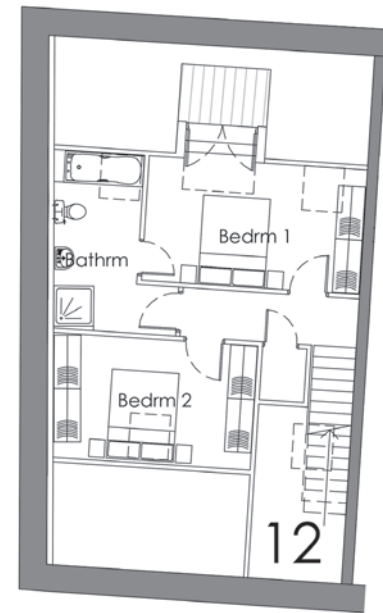
Apartment 27
 One bedroom

APARTMENT 12 | 3 BEDROOM

GROUND FLOOR



FIRST FLOOR



APARTMENT 12 - DUPLEX APARTMENT, OVER TWO FLOORS, SITUATED ON FIRST & SECOND FLOOR OF BREWERS QUAY. THREE BEDROOM, TWO BATHROOM, BALCONY

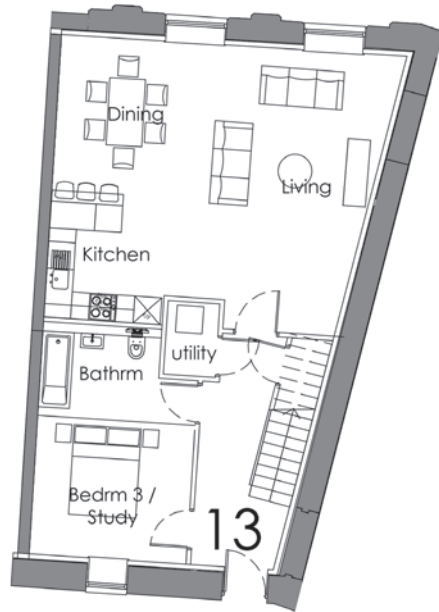
HOME SPECIFICATIONS

Living/Dining/Kitchen	6.9m x 6.2m	22'6" x 20'3"
Bedroom One	4.8m x 2.7m	15'7" x 8'8"
Bedroom Two	4.4m x 2.8m	14'4" x 9'1"
Bedroom Three	4.6m x 2.7m	15'9" x 8'8"

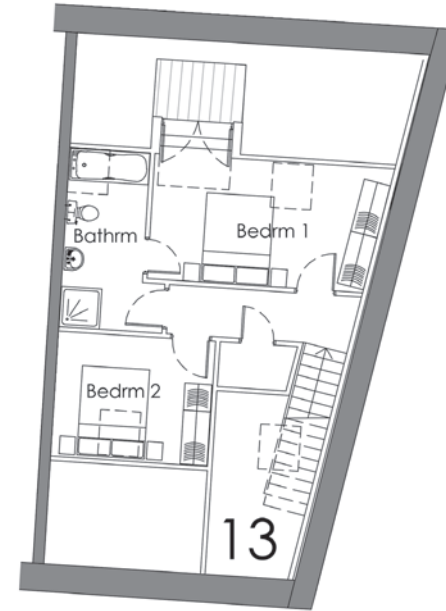
*all measurements are for guidance only and may vary slightly during the building stage

APARTMENT 13 | 3 BEDROOM

GROUND FLOOR



FIRST FLOOR



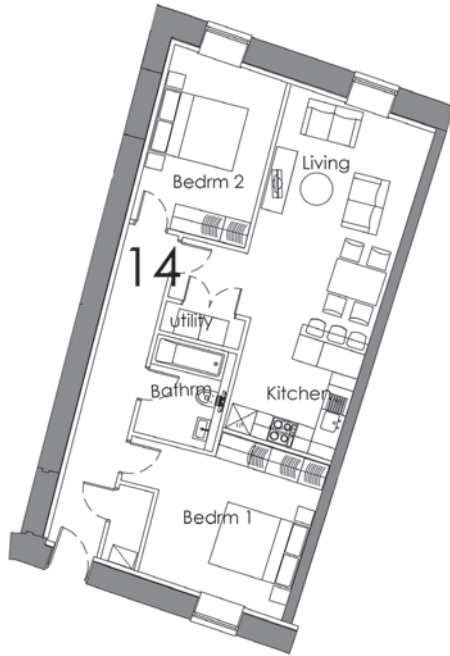
APARTMENT 13 - DUPLEX APARTMENT, OVER TWO FLOORS, SITUATED ON FIRST & SECOND FLOOR OF BREWERS QUAY. THREE BEDROOM, TWO BATHROOM, BALCONY

HOME SPECIFICATIONS

Living/Dining/Kitchen	7.0m x 6.3m	22'9" x 20'6"
Bedroom One	5.1m x 2.8m	16'7" x 9'1"
Bedroom Two	3.4m x 2.7m	11'1" x 8'8"
Bedroom Three	3.4m x 2.9m	11'1" x 9'5"

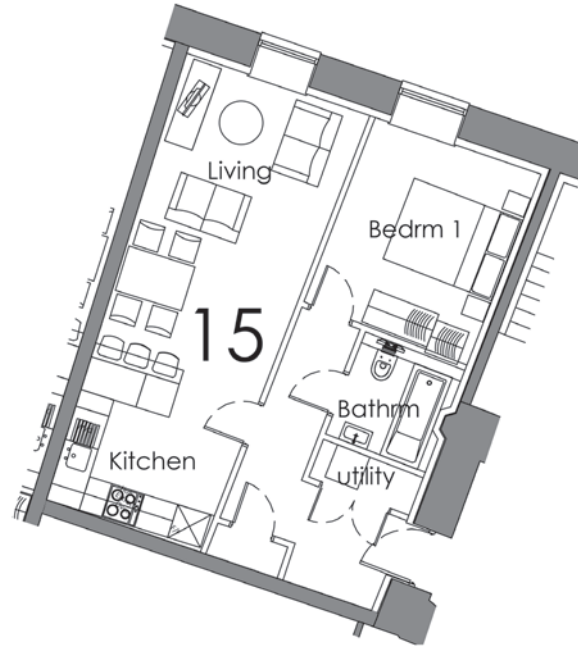
APARTMENTS | 14, 15 & 16

14 | 2 BEDROOM



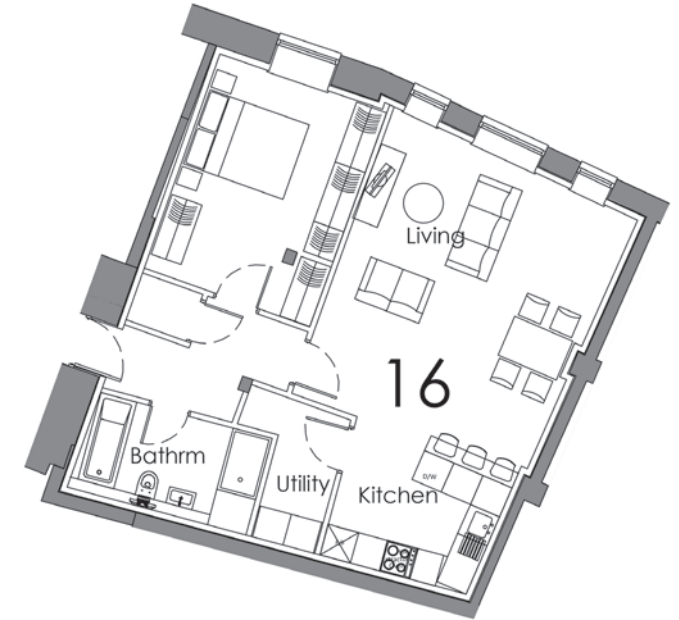
APARTMENT 14 - SITUATED ON THE FIRST FLOOR
TWO BEDROOM, ONE BATHROOM

15 | 1 BEDROOM



APARTMENT 15 - SITUATED ON THE FIRST FLOOR
ONE BEDROOM, ONE BATHROOM

16 | 1 BEDROOM



APARTMENT 16 - SITUATED ON THE FIRST FLOOR
ONE BEDROOM, ONE BATHROOM

HOME SPECIFICATIONS

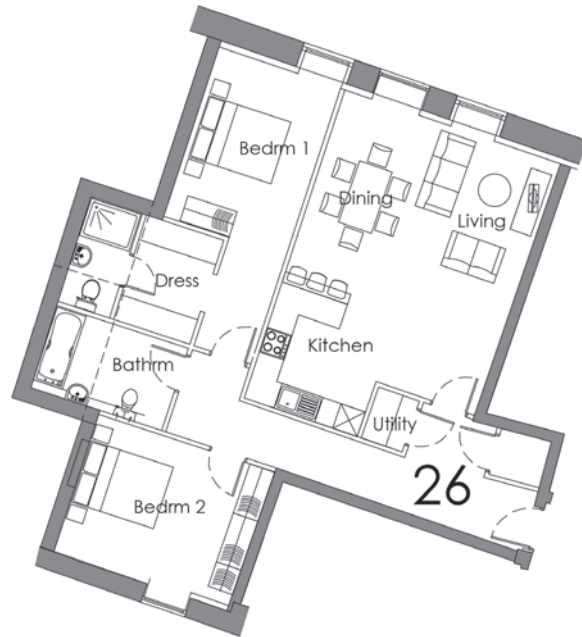
Living/Dining/Kitchen	3.4m x 7.9m	11'1" x 25'9"
Bedroom One	2.7m x 3.9m	8'8" x 12'7"
Bedroom Two	3.6m x 3.7m	11'8" x 12'1"

Living/Dining/Kitchen	3.2m x 8.1m	10'4" x 26'5"
Bedroom One	3.1m x 3.2m	10'1" x 10'4"

Living/Dining/Kitchen	8.1m x 5.0m	26'5" x 16'4"
Bedroom One	3.3m x 4.2m	10'8" x 13'7"

APARTMENTS | 26 & 27

26 | 2 BEDROOM



APARTMENT 26 - SITUATED ON THE SECOND FLOOR
TWO BEDROOM, TWO BATHROOM, DRESSING ROOM

HOME SPECIFICATIONS

Living/Dining/Kitchen	5.1m x 7.4m	16'7" x 24'2"
Bedroom One	3.0m x 4.1m	9'8" x 13'4"
Bedroom Two	4.1m x 3.0m	13'4" x 9'8"

27 | 1 BEDROOM



APARTMENT 27 - SITUATED ON THE SECOND FLOOR
ONE BEDROOM, ONE BATHROOM

Living/Dining/Kitchen	5.6m x 5.7m	18'3" x 18'7"
Bedroom One	2.6m x 4.6m	8'5" x 15'0"



Images for illustrative purposes only and should only be used for guidance



01305 831831



BREWERS QUAY

WEYMOUTH, DORSET



01305 564034

The contents of this brochure, including the information it contains, do not constitute a contractual agreement. Although every effort has been made to ensure accuracy, such assurance cannot be guaranteed; therefore, no warranty or representation is provided in that regard. Layouts and designs of apartments are merely illustrative and subject to change. The apartment specifications listed in this brochure are expected to be as they are at the time of preparation. However, they are subject to change in accordance with any permitted deviations outlined in the apartment sale contracts. The dimensions provided in any text or plan are only approximations; actual measurements may vary up to 5%. Computer-generated photographs and images are merely illustrative. Every transaction is still governed by the contract. All information pertaining to potential retail or commercial tenants is for informational purposes only; the tenants' final identities are subject to change. Furniture depicted in photographs and computer-generated images is not included in sales. Please note that Brewers Quay is solely a marketing designation and may not be included in the finalised postal address. Without proper authorisation, neither the agents nor any individual under their employment may make or provide any assurance, representation, warranty, or guarantee (orally or in writing) regarding the development or its components. All dates provided (including completion dates), while not exhaustive, are merely approximations predicated on the present projected development schedule and are thus susceptible to modification. The provisions outlined in this document pertain to the anticipated facilities for the development. However, the developer retains the prerogative to modify any of these facilities without prior notice. Furthermore, it is possible that amenities that are being supplied will not be operational when a specific flat sale is scheduled to conclude. Additionally, specific facilities might be inaccessible pending the completion of a particular phase of development.



MIDNIGHT
MEDIA